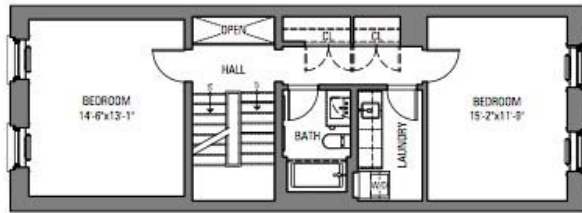
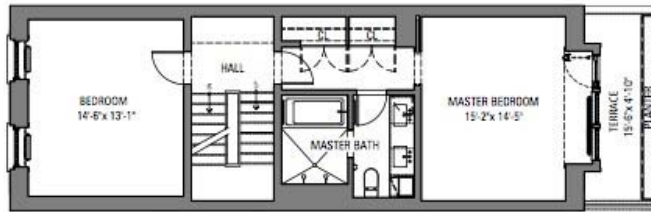


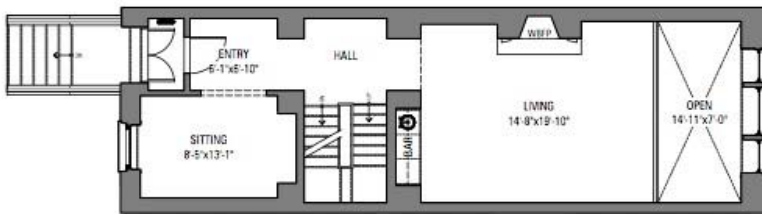
PENTHOUSE



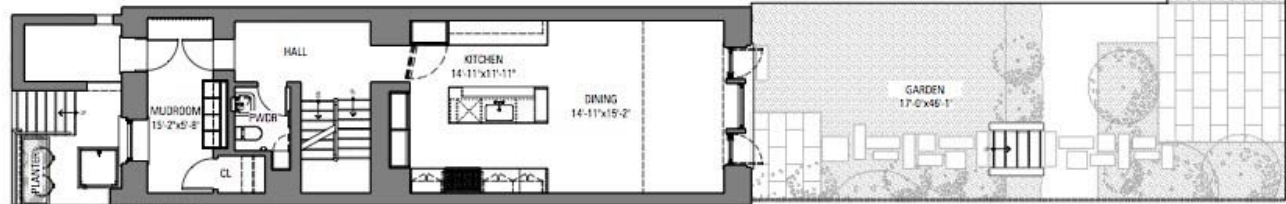
3RD FLOOR



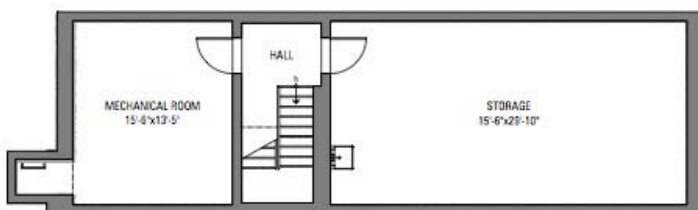
2ND FLOOR



PARLOR FLOOR



GARDEN FLOOR



CELLAR FLOOR

**4 STRONG PLACE**

<b>INTERIOR</b>	3,730 SF
<b>CELLAR, 9FT CEILING</b>	915 SF
<b>EXTERIOR TOTAL</b>	1,575 SF
<b>GARDEN</b>	1,040 SF
<b>MASTER BEDROOM TERRACE</b>	85 SF
<b>PENTHOUSE TERRACE FRONT</b>	235 SF
<b>PENTHOUSE TERRACE REAR</b>	215 SF

**DEFINING FEATURES**

- Radiant Heated Wood Floors
- Wood Burning Fireplace
- Custom, Painted, Wood Cabinetry
- Mudroom with Custom Built-Ins
- 2-Story Rear Window Wall
- Double-pane insulated Marvin Windows
- King-sized Bedrooms
- 46' Deep Garden
- Tree-Lined Street Views



REAR YARD  
24'-11" x 10'-2"

**Betsy Hoffman** (Elizabeth Hoffman),  
*Real Estate Salesperson*  
 TEL [917] 622-3879  
 bhoffman@BrennanRealtyServices.com

[www.brennanrealtyservices.com](http://www.brennanrealtyservices.com)  
 Brennan Realty Services, LLC is a licensed  
 real estate brokerage in New York.